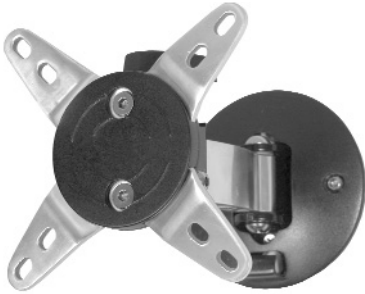
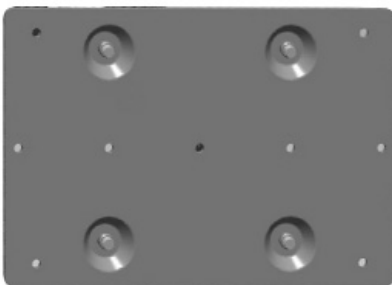
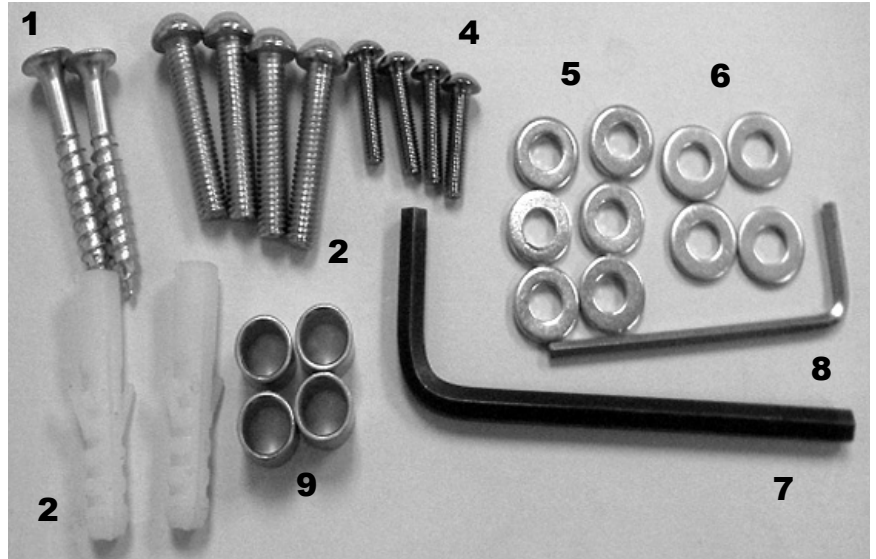


Mounting Instructions



Included Hardware:

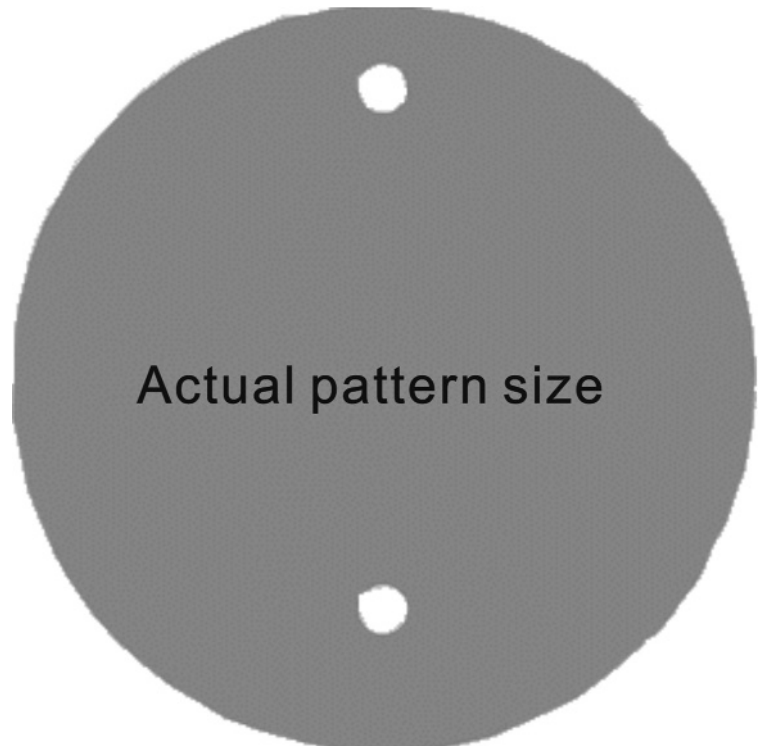
1. Wood screws M6*20 x 2 PCS
2. Plastic anchors x 2 PCS
3. BHS M6*25 x 4 PCS
4. BHS M4*25 x 4 PCS
5. Steel washer F6.2 x 6PCS
6. Steel washer F4 x 4PCS
7. Allen key M5 x 1 PC
8. Allen key M2.5 x 1 PC
9. Spacer F8.2 x 4 PCS
10. BHS M4*10 x 4 PCS for extra VESA plate fastening
11. VESA Plate for 100-200 mm hole patterns (see step 7)



**IN ADDITION, YOU WILL ALSO
NEED A POWER DRILL.**

Mounting your monitor using the #7434 Plasma Mount:

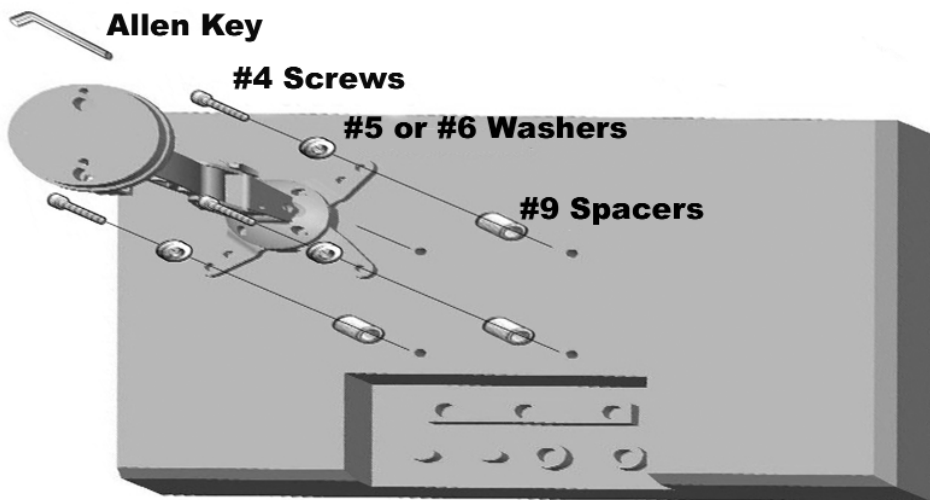
1. Cut out pattern.
2. If mounting onto drywall surface, find wooden stud using a studfinder. Tape pattern to wall in desired location, making sure that holes are completely vertical (using a level) and that holes will be secured in the stud in a drywall surface.
3. Drill 3/32" diameter holes into the wall using power drill. Through the centered "holes" on the pattern.
4. Using the #8 Allen Key, unscrew the plastic cover from the steel plate and slide forward along the shaft of the #7434 Plasma Mount.



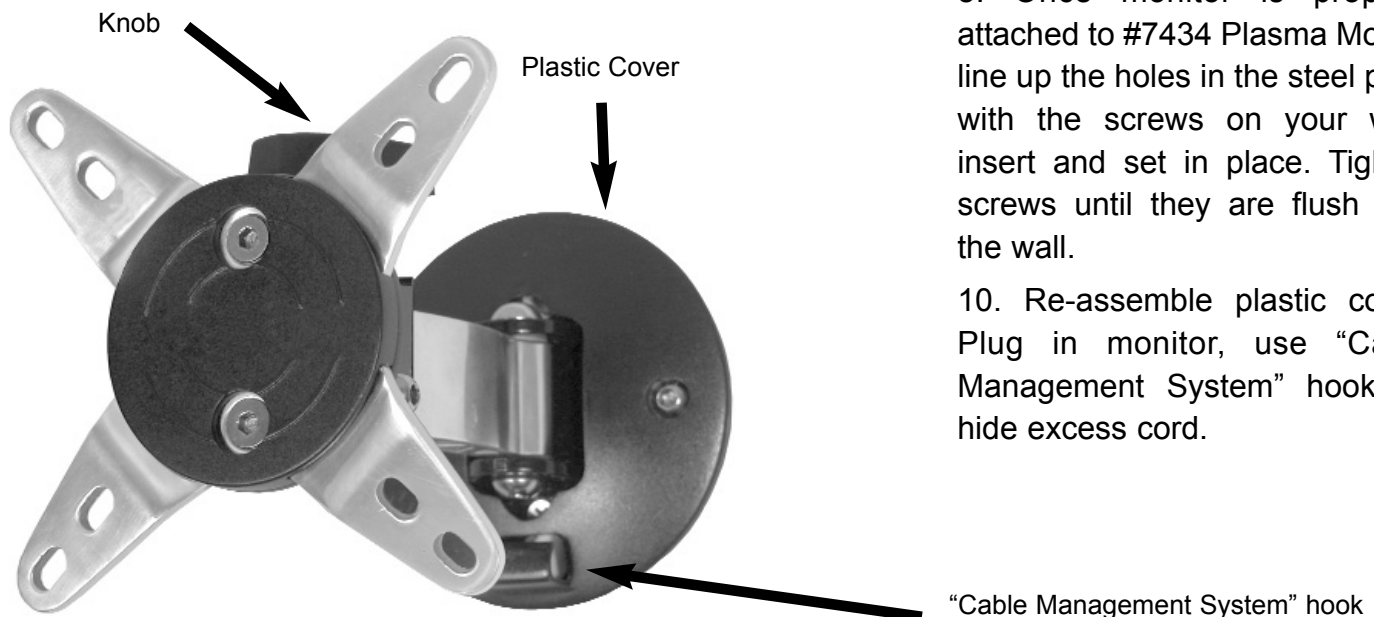
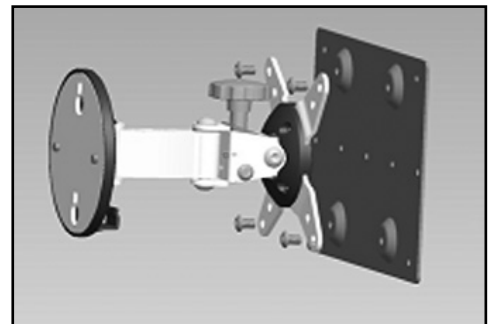
Mounting Instructions

- Using the appropriate hardware for your mounting surface, screw fastener into your wall, leaving AT LEAST 1/4" spaces between back of screwhead and wall, so that the screwhead is NOT flush with the wall surface.
- Attach #7434 Plasma Mount to wall to make sure hole placement is correct. The knob should be on the top of the mount.
- Remove #7434 Plasma Mount from the wall and attach to to the back of your monitor. Use #9 Spacers, #5 or #6 washers and #4 Screws. NOTE: If the hole pattern on the back of your monitor is 100-200 mm, you will need to first attach the adapter plate to the #7434, using the #10 screws. Then attach your monitor to the plate.

Mounting monitor to #7435



Adapter Plate



- Once monitor is properly attached to #7434 Plasma Mount, line up the holes in the steel plate with the screws on your wall, insert and set in place. Tighten screws until they are flush with the wall.

- Re-assemble plastic cover. Plug in monitor, use "Cable Management System" hook, to hide excess cord.

WARRANTY Buddy Products has a 2 year limited warranty against defects in workmanship and materials. Returns will be handled on a case by case basis.